

NOVA BALLAST SYSTEM

TYPE-C

PRODUCT SHEET

NOVA SERIES PRODUCTS

Application: Flat roofs
 Tilt angle: 10°
 Panel layout: Landscape
 Panel width: 990mm-1303mm
 Panel thickness: 30-40mm
 Material: AL6005-T5&SUS304&Zinc-Aluminum-Magnesium Coated Steel
 Warranty: 15 years



FAST & EASY
INSTALLATION



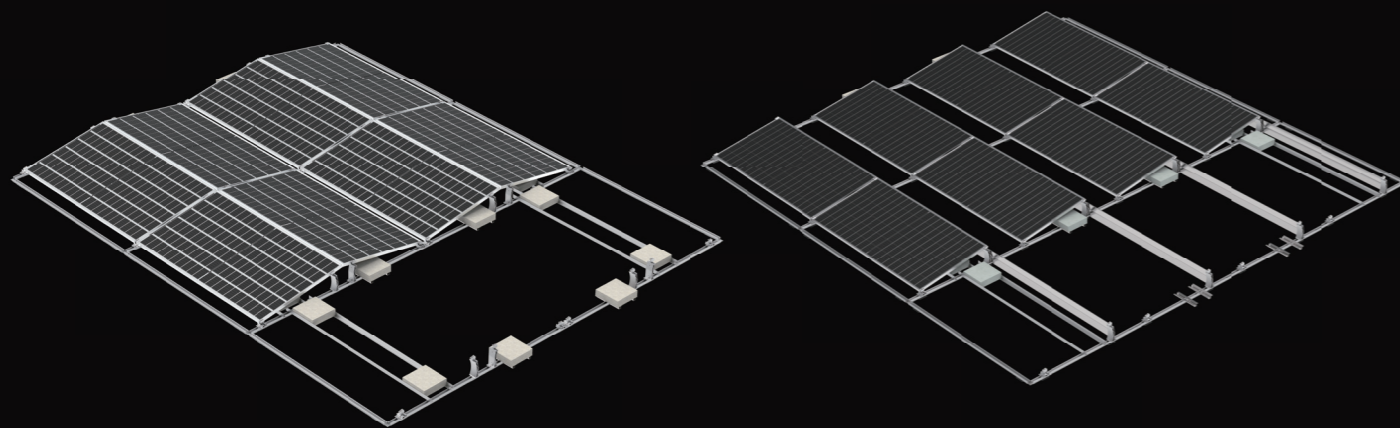
COST EFFECTIVE
SOLUTIONS



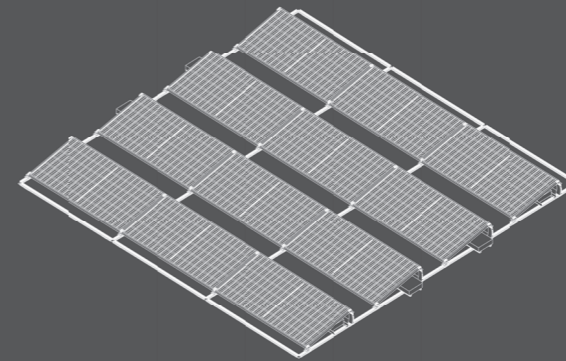
QUALITY
ASSURED



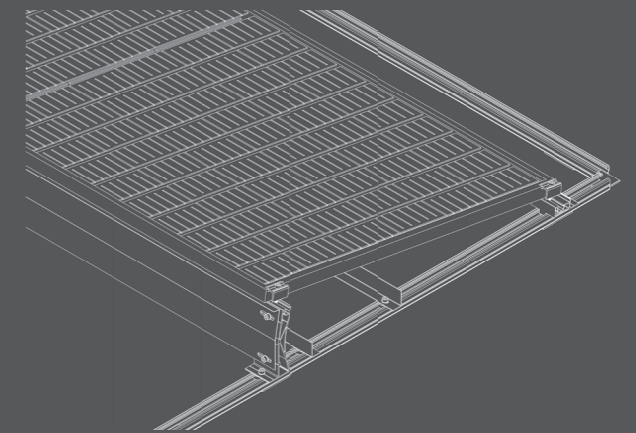
15 YEAR
WARRANTY



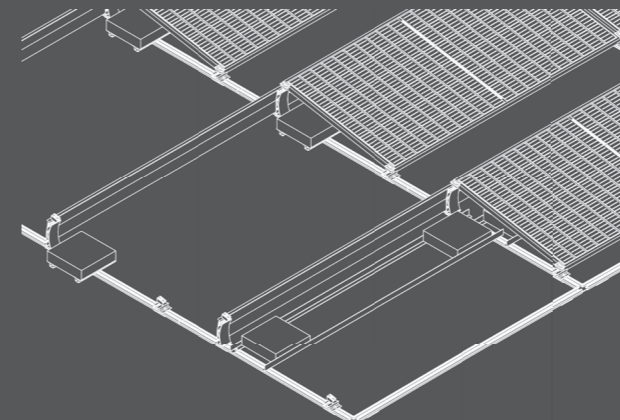
KEY FEATURES



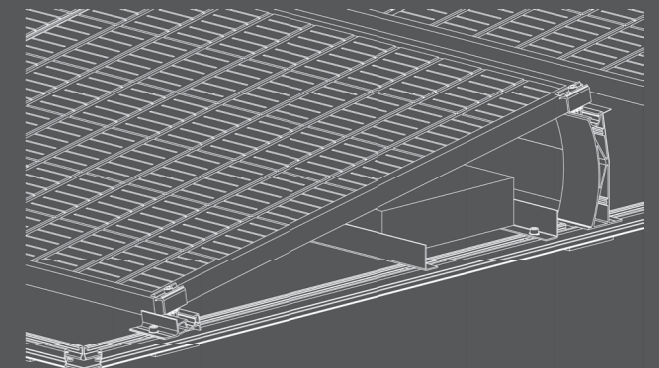
1. Suitable for south north and east west orientation panel layout.



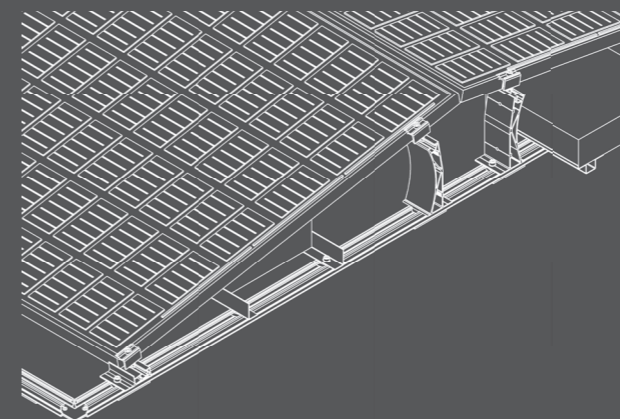
2. Enhance stability with our versatile ballast trays, designed for compatibility with various concrete types. The unique structure ensures increased stability across the entire array.



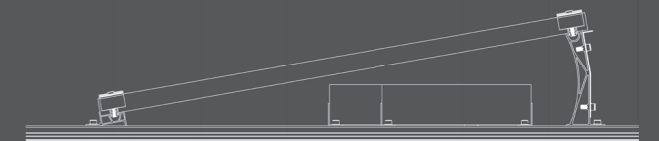
3. The EPDM Base offers enhanced friction with the roof, providing cushioning and protection. Its raised design allows for proper water drainage, effectively preventing corrosion.



4. Our front and rear leg design is uniquely tailored to be compatible with a wide range of NOVA series panel clamps.



5. Strategically engineered for optimal strength and cost-effectiveness, our front and rear legs utilize triangular mechanics to maximize structural integrity without compromising value.



6. Aluminum or Zinc-Aluminum-Magnesium rails are available, the rails can also be used as a cable tray, making the system as a whole safer and much more aesthetically pleasing with minimal exposed components.