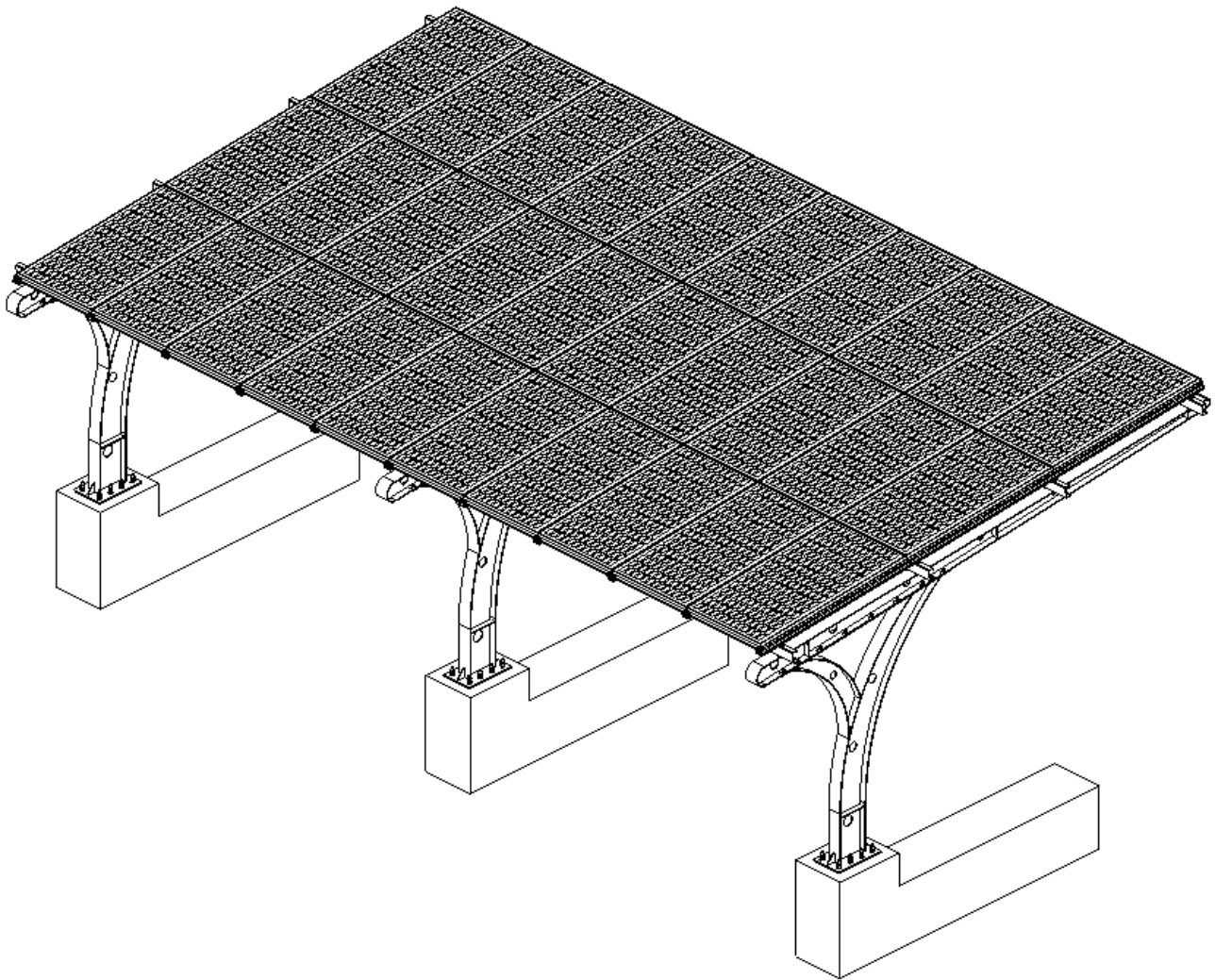
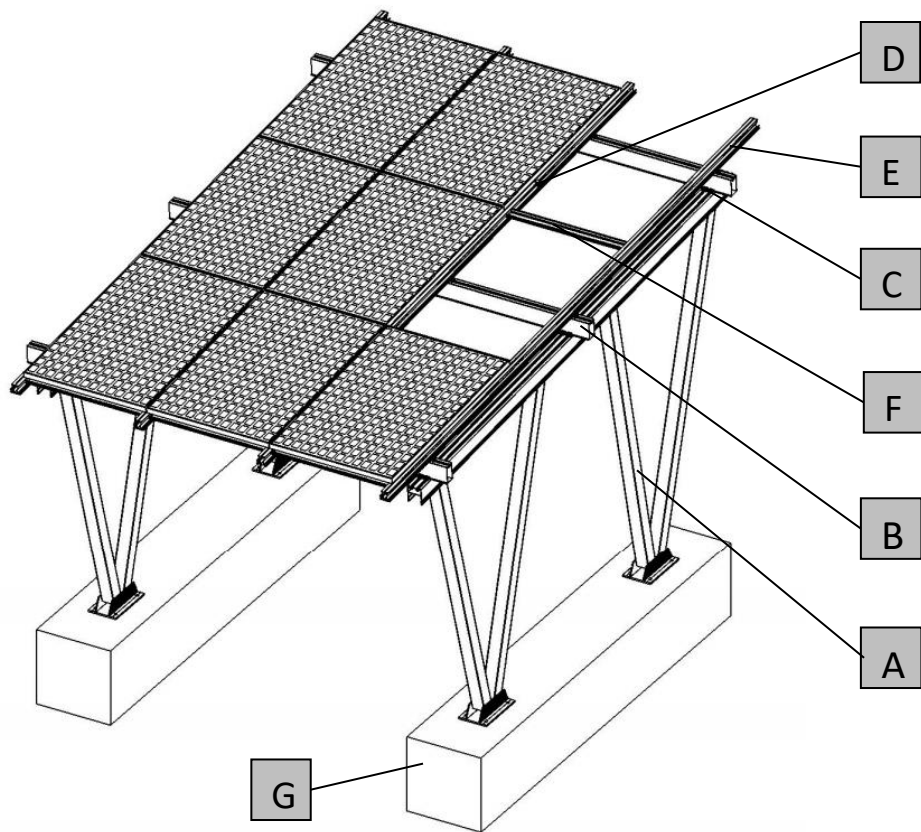


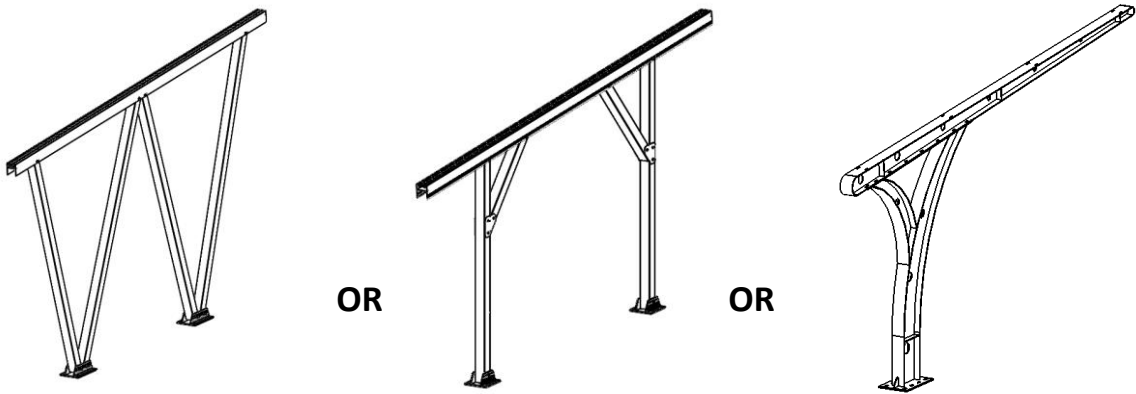
# Waterproof Carport Installation Instructions



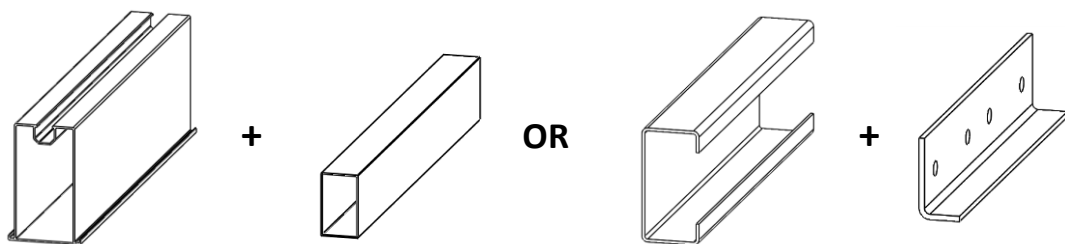
# Carport support structure



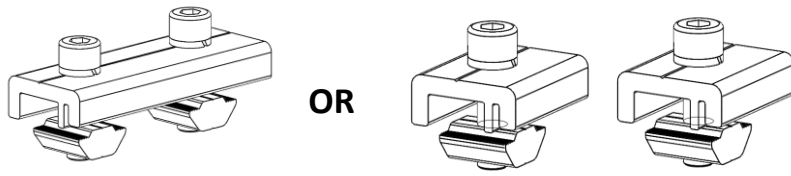
A



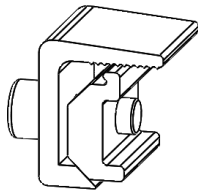
B



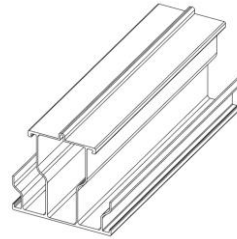
C



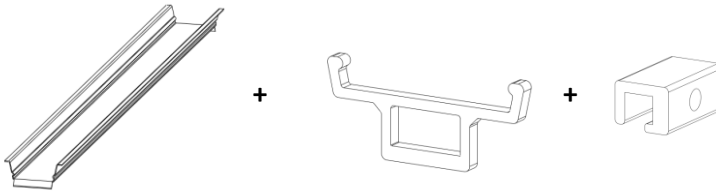
D



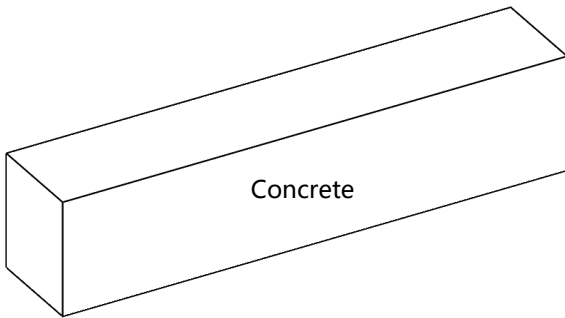
E



F



G



+



M8



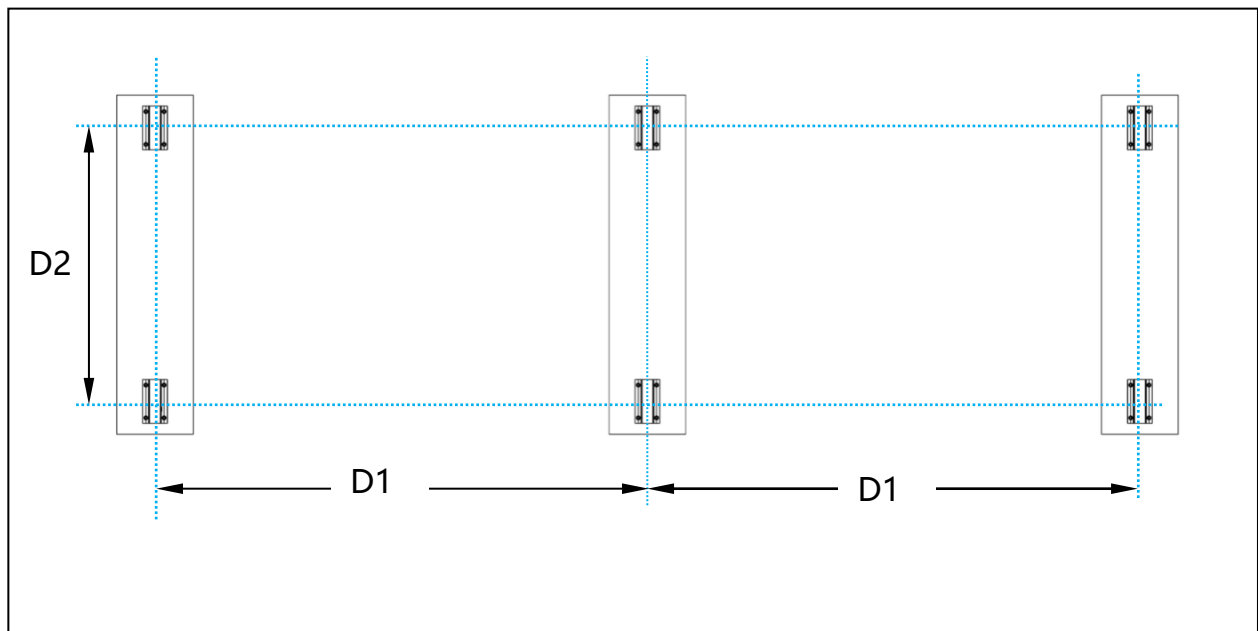
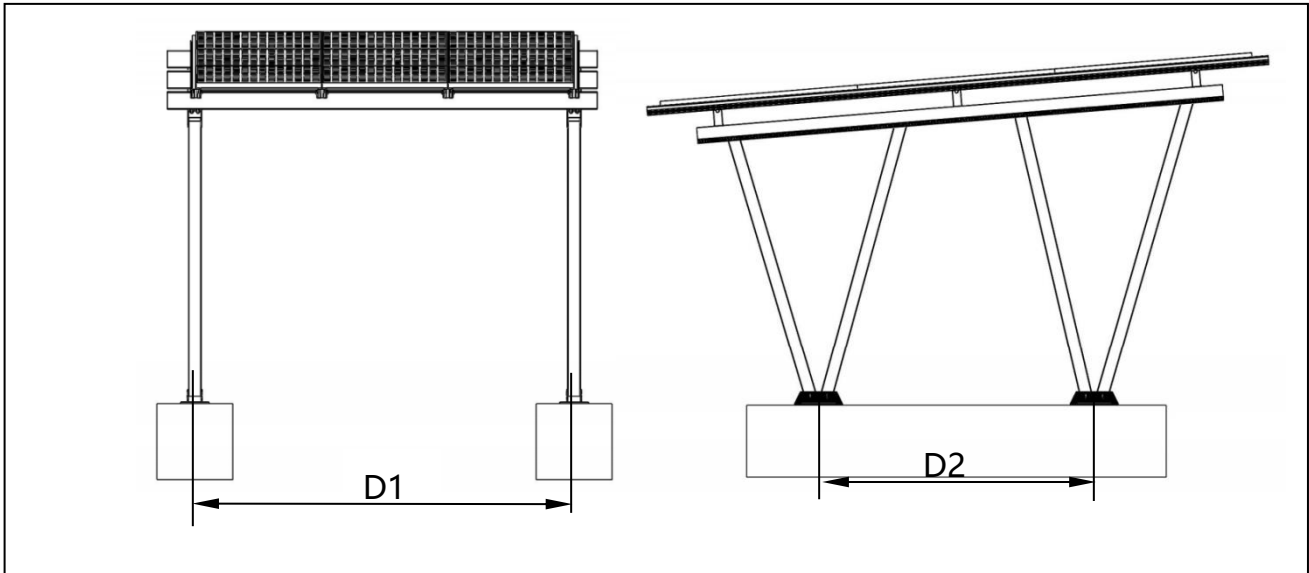
13



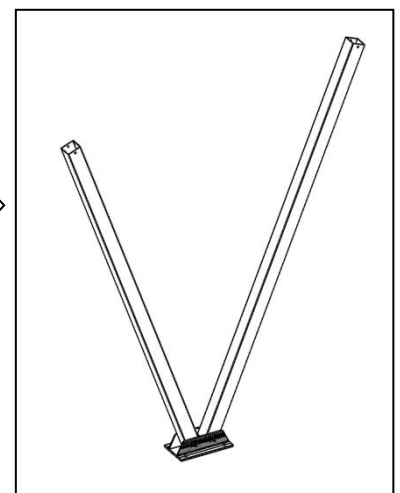
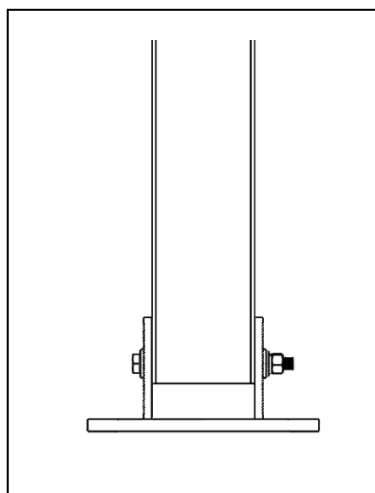
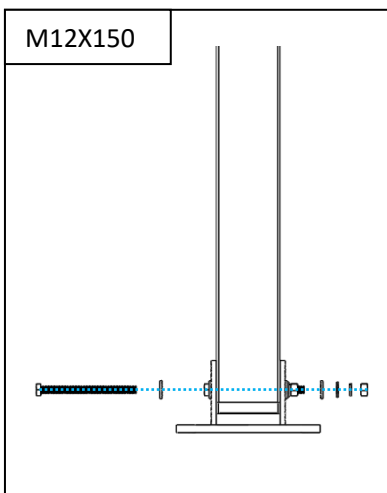
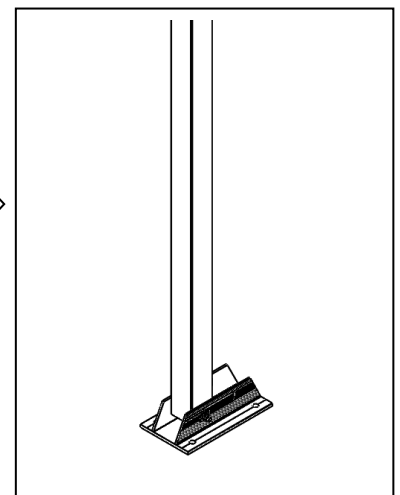
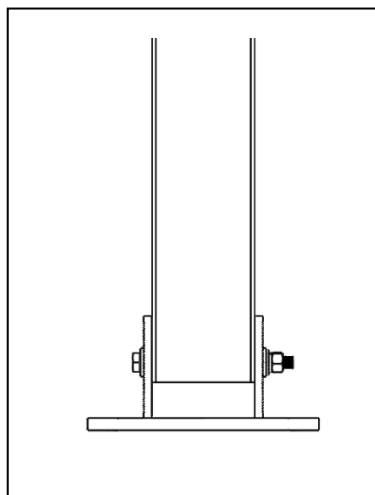
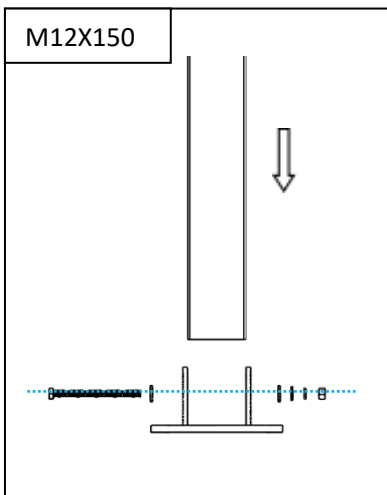
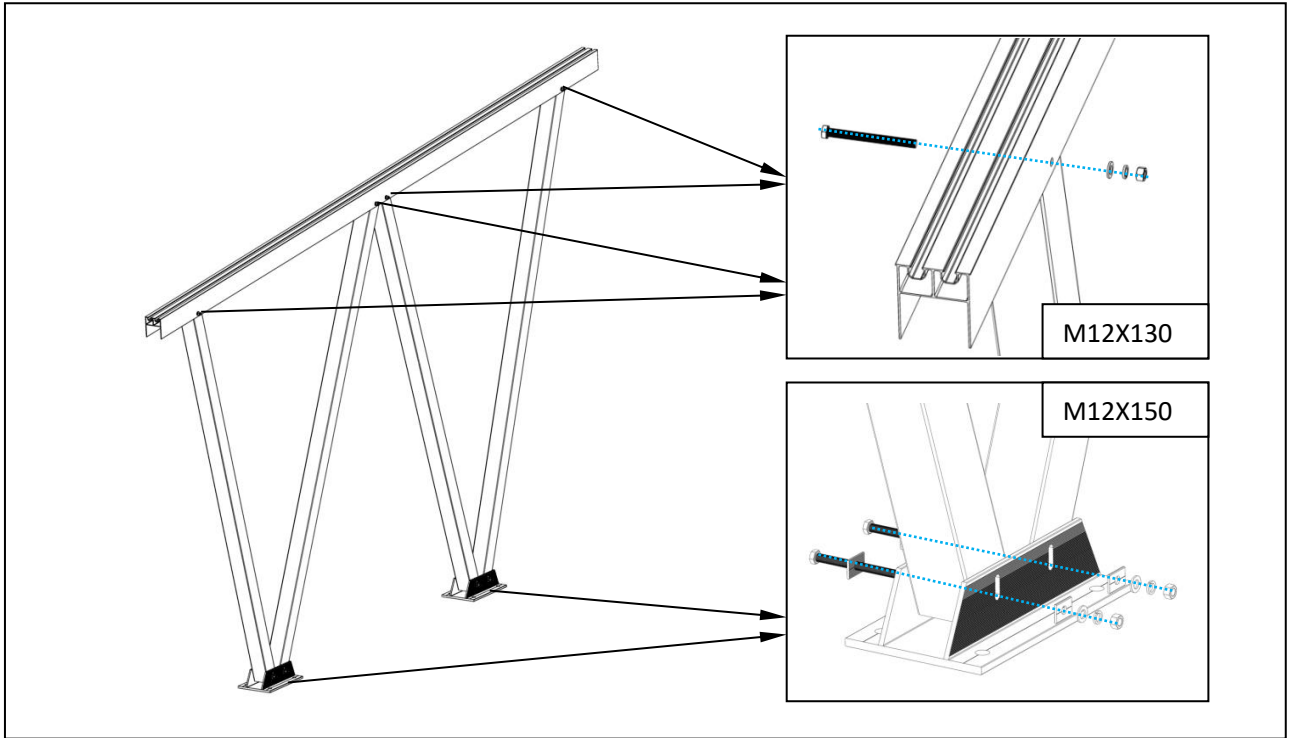
## Installation Steps

### 1. Install the concrete foundation

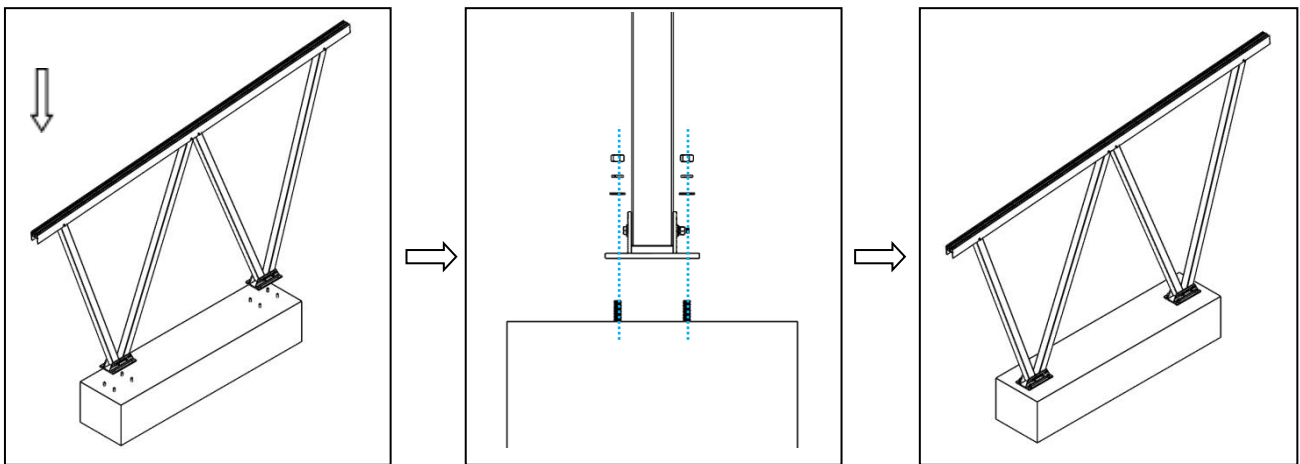
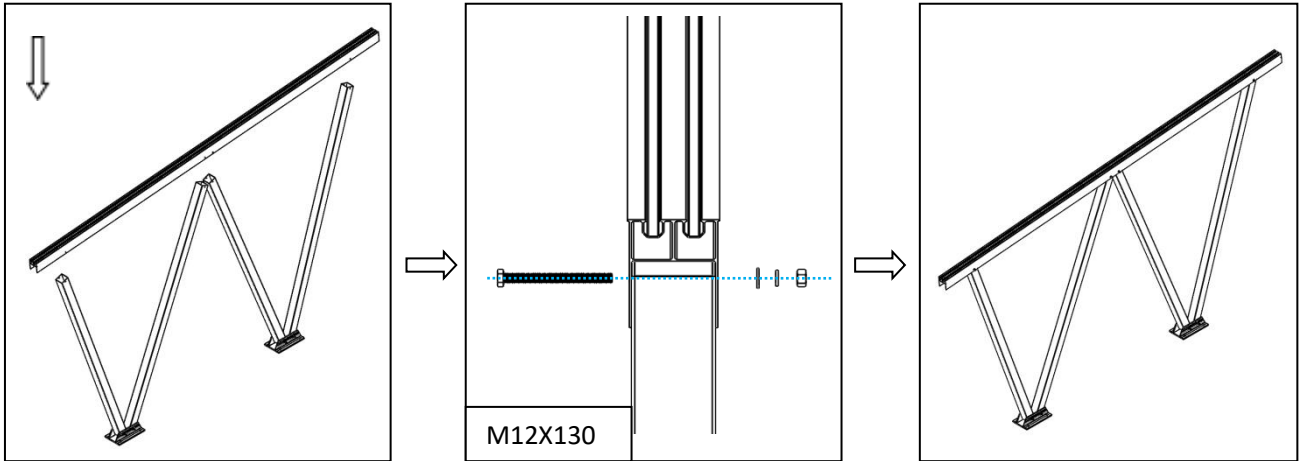
Mark the position of each concrete foundation with a spirit level, string or other relevant tools according to D1 and D2 in the drawing. The concrete foundations in the same row must be kept at the same height and on the same straight line, and the spacing and span shall be subject to the technical drawings.



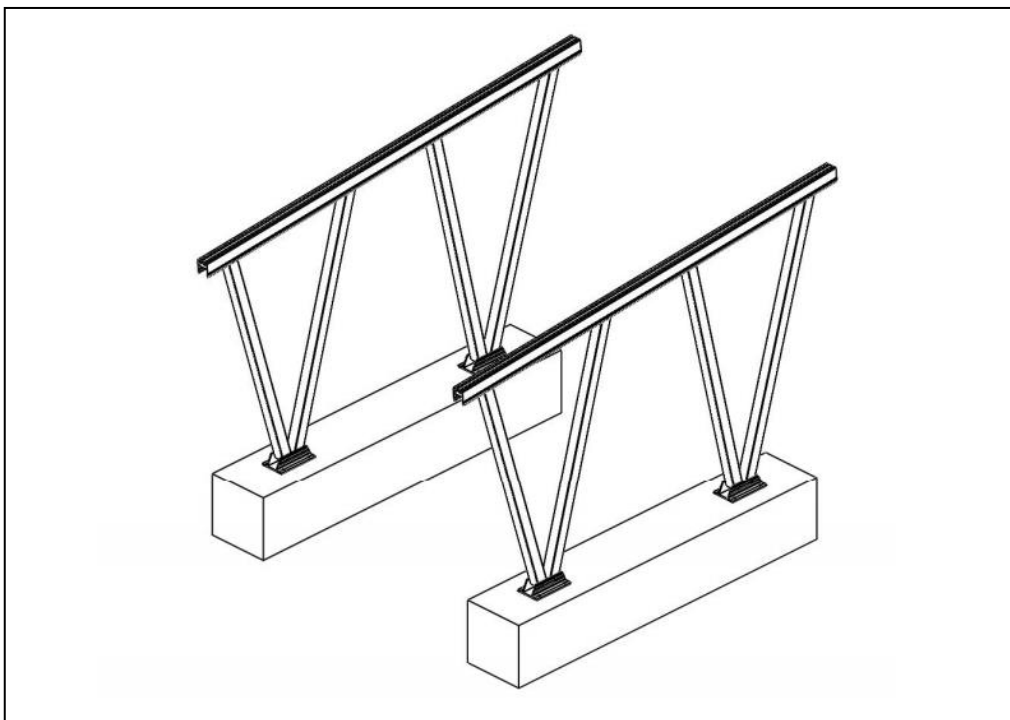
## 2 . Bracket pre-assembly (placed on the ground for pre-assembly)



Attach the rafter to the column and tighten the bolts.

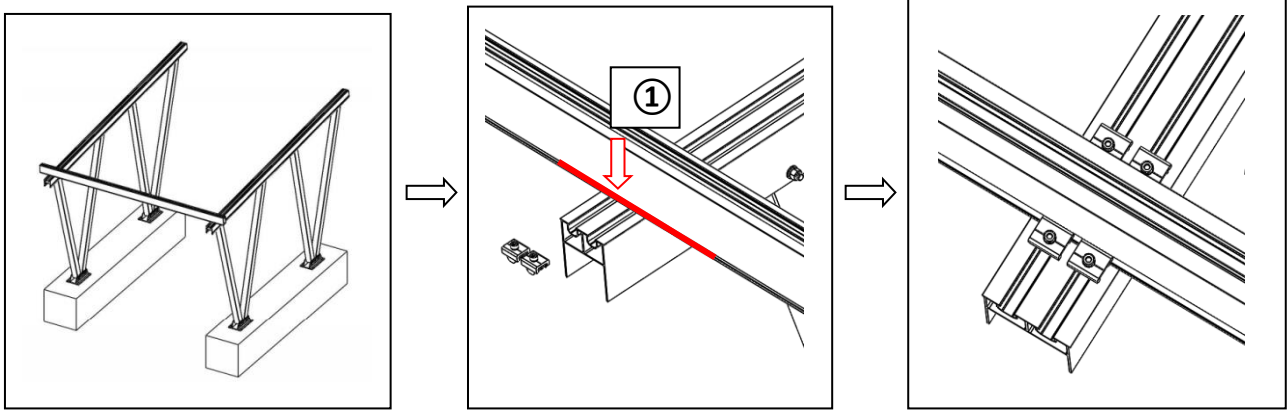


The pre-assembled bracket is placed according to the design span. Fix it on the ground with embedded bolts, and tighten the bolts.

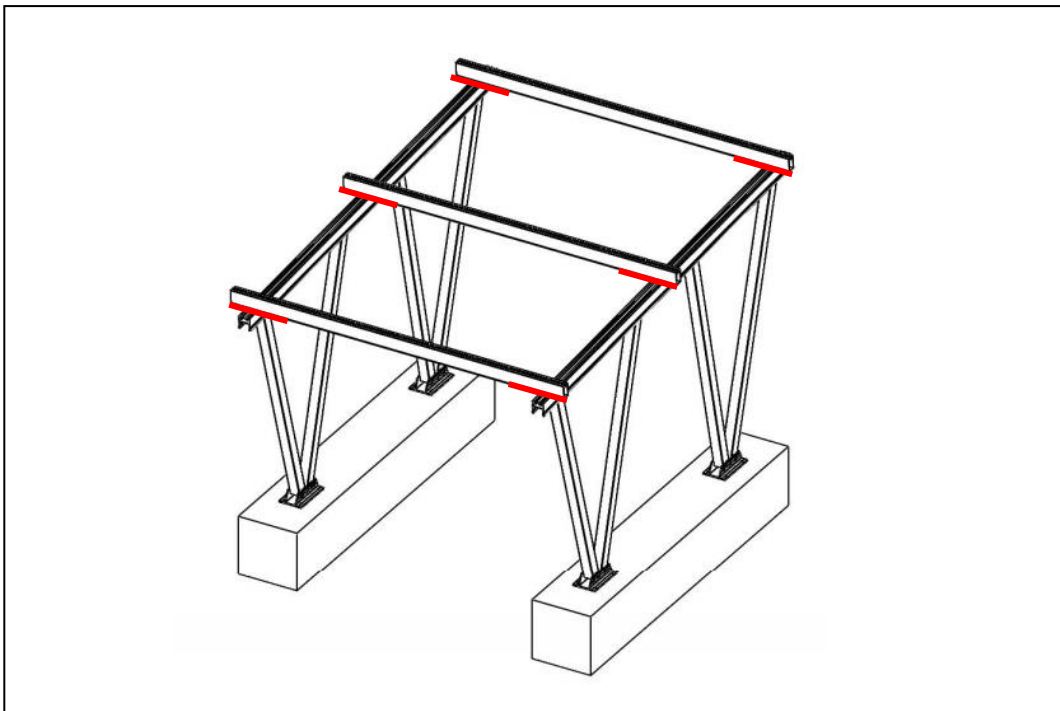


### 3. Install GKR rails

According to the positioning size, make the installation of GKR rail position mark on the rafter of pre-assembled bracket (the GKR rail position from the rafter: 200mm, 2200mm, 4200mm), put the GKR rails on the the rafter of pre-assembled bracket mark, place it according to the design span, adjust the position of both ends, install 4 sets of tri-rail clamp on each rail two sides.



Install according to GKR rail position mark

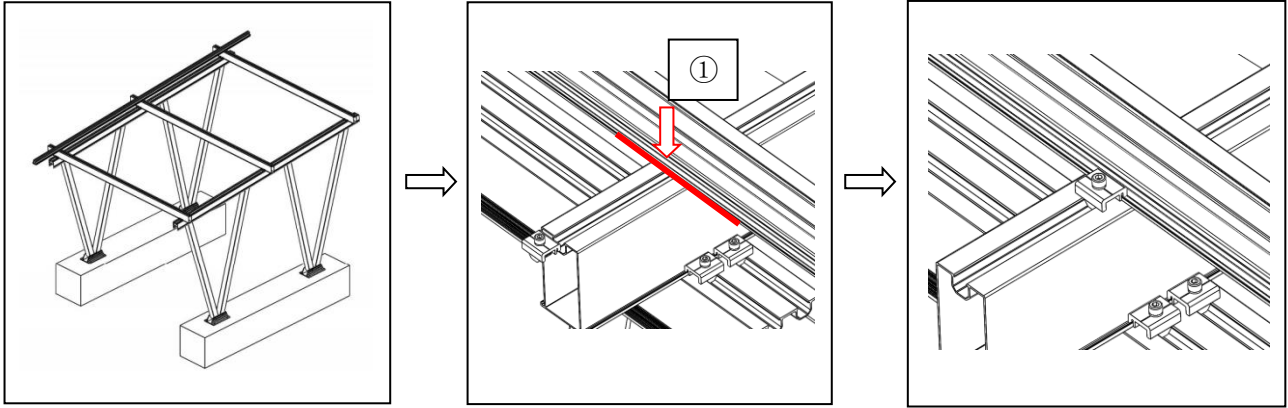


Repeat until all rails are installed, making sure the rails are aligned.



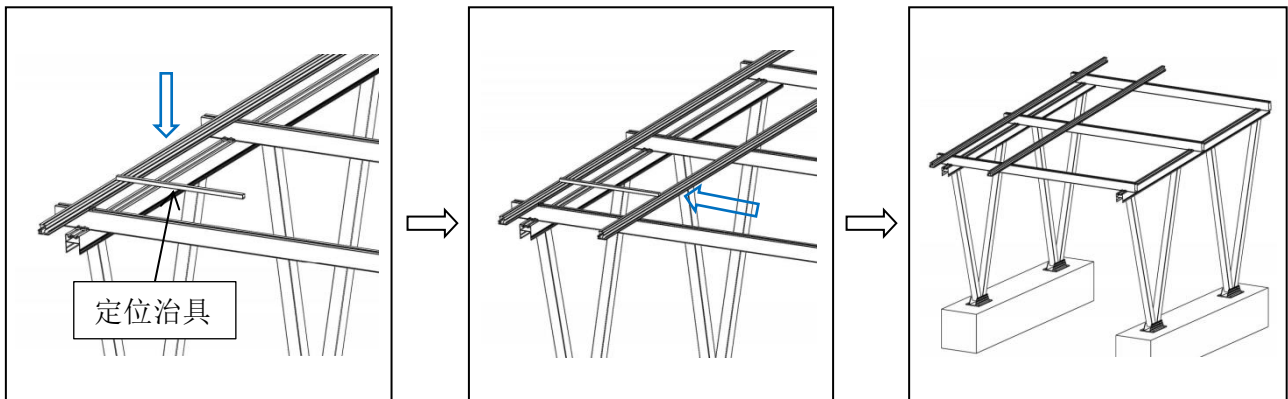
#### 4. Install GWR rails

Start the installation according to the first GWR rail on the left, mark the position of the first GWR rail on the GKR rail according to the positioning mark (the position of the first GWR rail from the GKR rail end: 202.5mm), place the GWR rail on the GKR rail mark, adjust the positions at both ends, and install 2 sets of tri-rail clamp on each rail two sides.

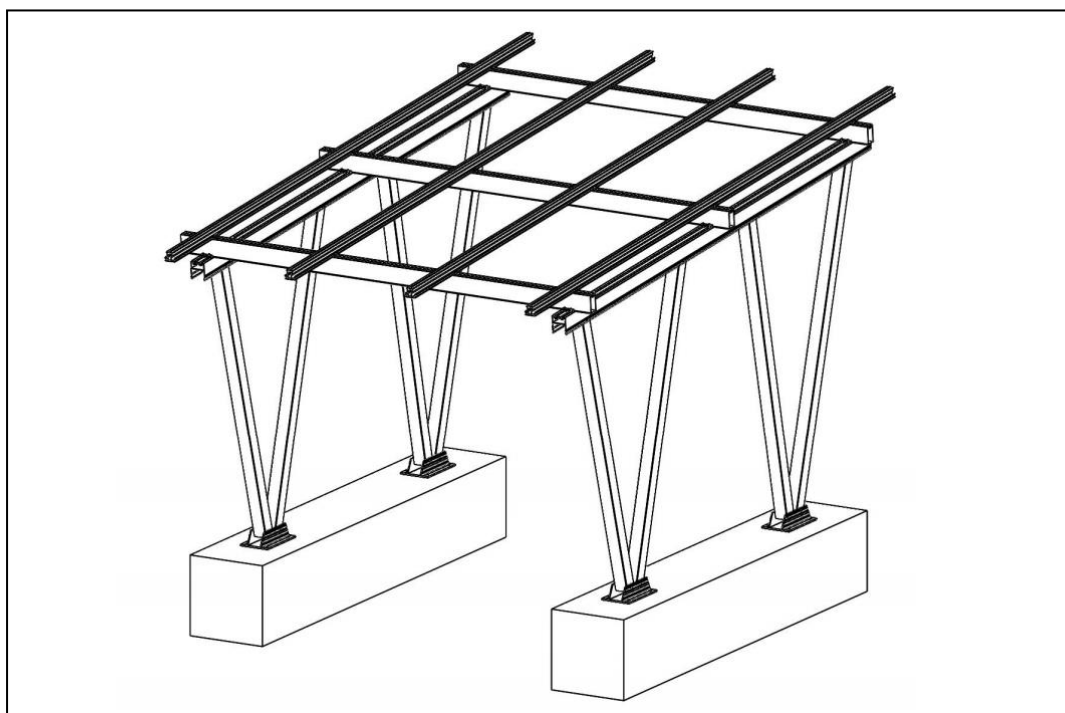


#### Install according to GWR rail position mark

Install the second GWR rail, determine the position of the second GWR rail according to the positioning fixture, adjust the positions of both ends, and install 2 sets of tri-rail clamp on each rail two sides.



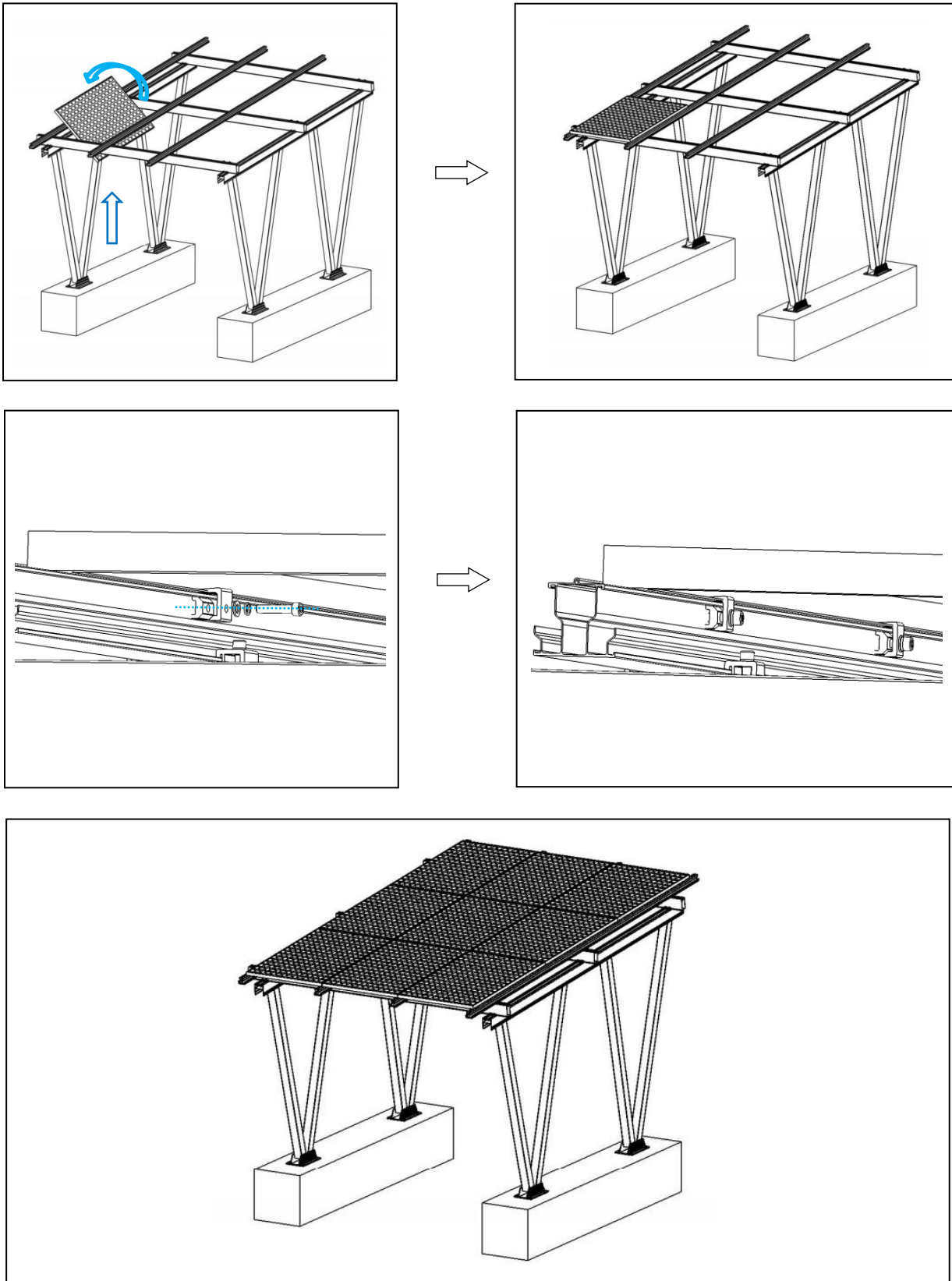
Repeat until all rails are installed, making sure the rails are aligned.





## 5. Install solar panels

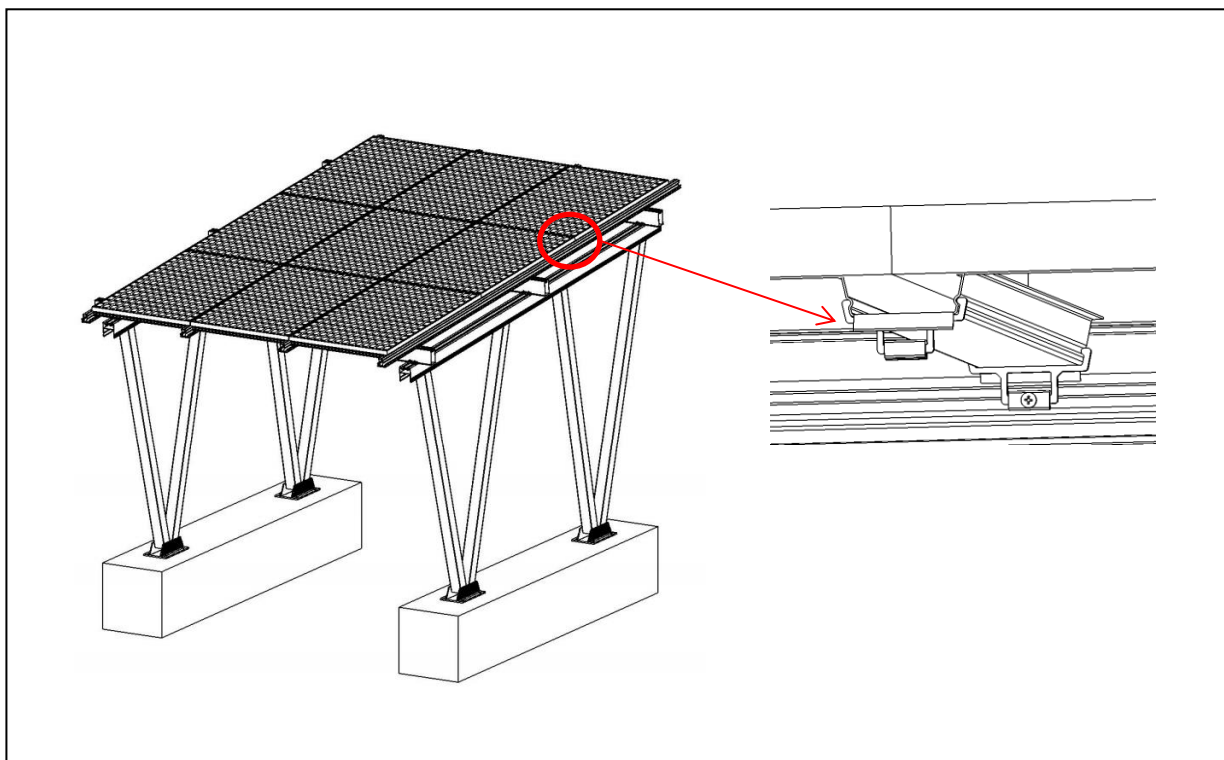
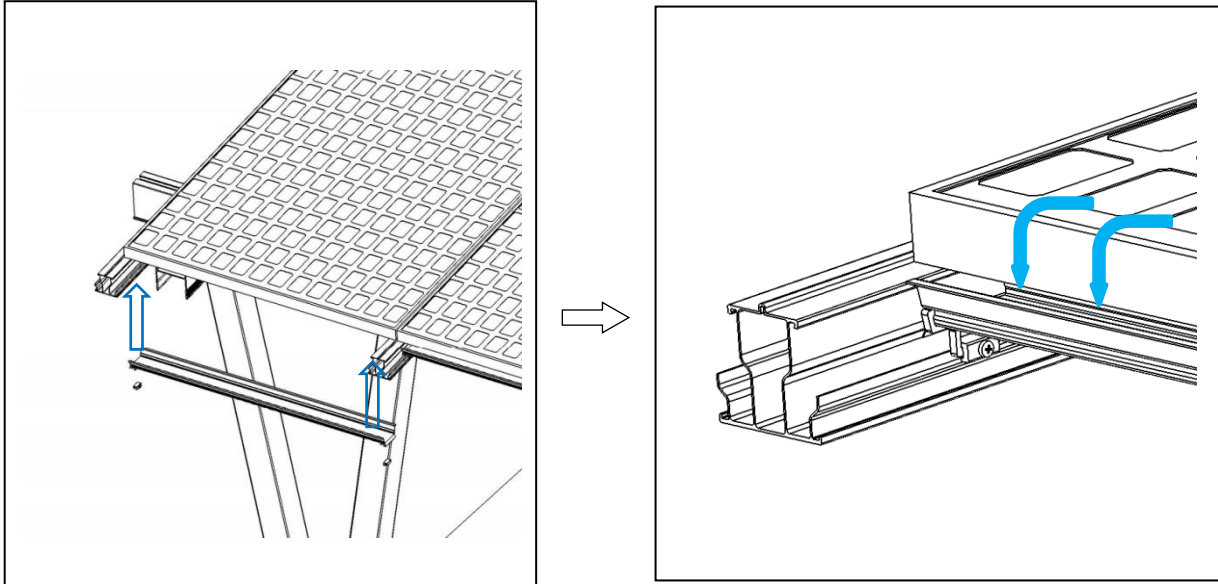
The solar panel can be installed when the third GWR rail is installed. The solar panel is tilted out from below and placed into the rail. Due to the height, stairs or lifting equipment are required to ensure installing. The position of the first board shall be measured according to the mark on the design drawing and fixed from the bottom of the solar panel with a fixture, which is the 1/2 of the length of solar panel. The installation method is as follows: insert the clamping block of the fixture into the matching groove above the rail, and press the assembly automatically after the tool is locked. Install the first piece of the same method into the same section of other solar panels, as far as possible without leaving gaps between solar panels.



Solar panel installation completed. Please check to make sure all bolts are tightened again.

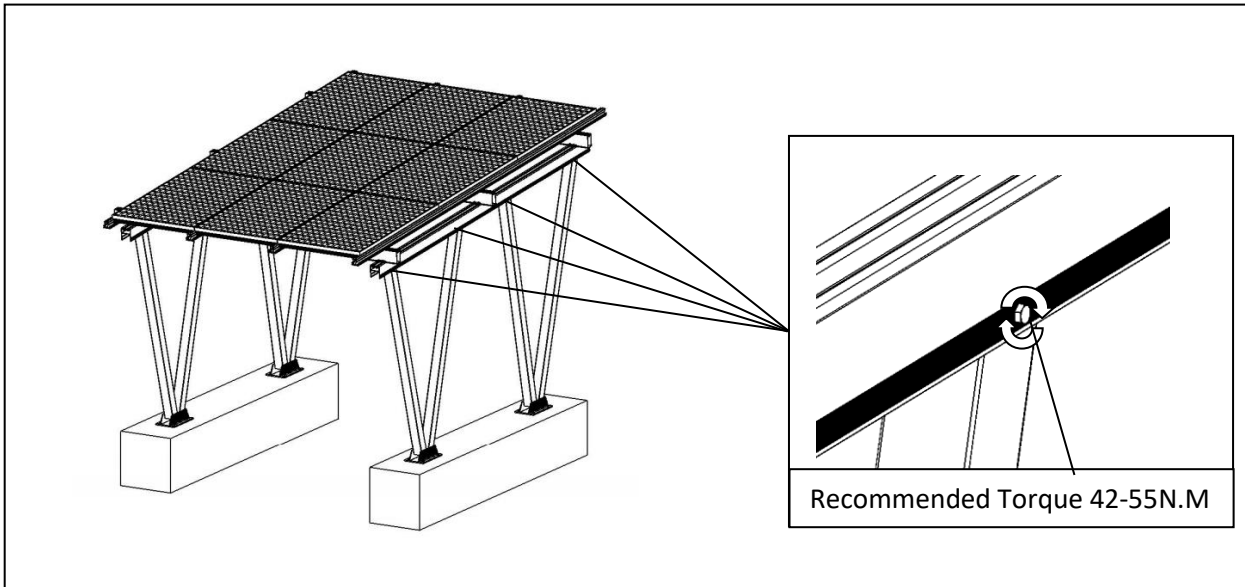
## 6. Installation drain

According to personal habits, the sequence of the drainage tank is set at the bottom of each component, and the top component is not set at the bottom.



## 7. locking screw


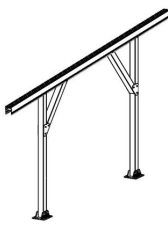
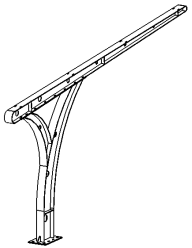
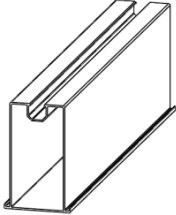
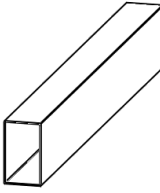
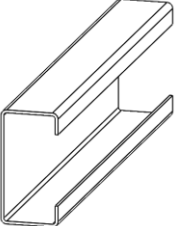
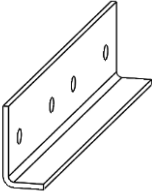
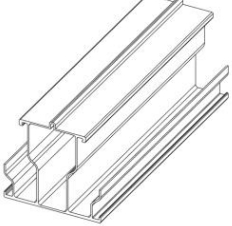
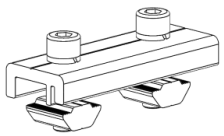
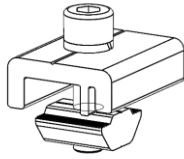
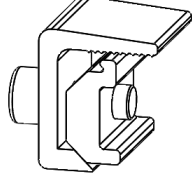
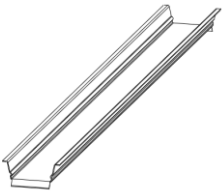
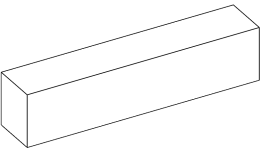
Shaking the shed bracket for several times to reduce assembly error, first tighten the bolts above the bracket, and then tighten the screws at the base.



## 8. Test by water

Spray water on the solar panels and observe the water flow under the bracket. Please observe whether the installation is correct according to the requirements if overflow and dripping are found, adjust according to the above steps.

**Components**

<b>Part name</b>	<b>Pre-assembled bracket</b>	<b>Pre-assembled bracket</b>	<b>Pre-assembled bracket</b>
<b>Part No.</b>	<b>CPSA-01</b>	<b>CPSA-02</b>	
<b>Picture</b>		<b>OR</b>	
		<b>OR</b>	
<b>Part name</b>	<b>GKR rail</b>	<b>GKR rail connector</b>	
<b>Part No.</b>	<b>RA-GKR-0000</b>	<b>SK-GKR-0800</b>	
<b>Picture</b>			
<b>Part name</b>	<b>C type rail</b>	<b>C type rail connector</b>	<b>GWR rail</b>
<b>Part No.</b>	<b>HOP-M16-0000</b>		<b>RA-GWR-0000</b>
<b>Picture</b>			
<b>Part name</b>	<b>Tri-rail clamp</b>	<b>Tri-rail clamp</b>	<b>Press block</b>
<b>Part No.</b>	<b>RC-GR2-NS1</b>	<b>RC-GR1-NS1</b>	
<b>Picture</b>		<b>OR</b>	
			
<b>Part name</b>	<b>Drain rail</b>	<b>Concrete</b>	
<b>Part No.</b>			
<b>Picture</b>			



*XIAMENHOPERGYPHOTOVOLTAICTECHNOLOGYCO. LTD.*

*Address: 630 Tonghong Road, Tongan District, Xiamen 361100 CHINA*

*Phone :+86-592-5689685*

*Fax : 86-592-5638096*

*Mail : [info@hopergy.com](mailto:info@hopergy.com)*

*Web : [www.hopergy.com](http://www.hopergy.com)*