

NOVA ROOF WALKWAY SYSTEM

PRODUCT SHEET

NOVA SERIES PRODUCTS

Product material: Zinc-Aluminum-Magnesium Coated Steel
Product length: 1m-6m
Product width: 350 / 450mm
Product thickness: 1.0 / 1.2mm
Product application: Roof PV installation, maintenance and cleaning
Warranty: 15 years



FAST & EASY
INSTALLATION



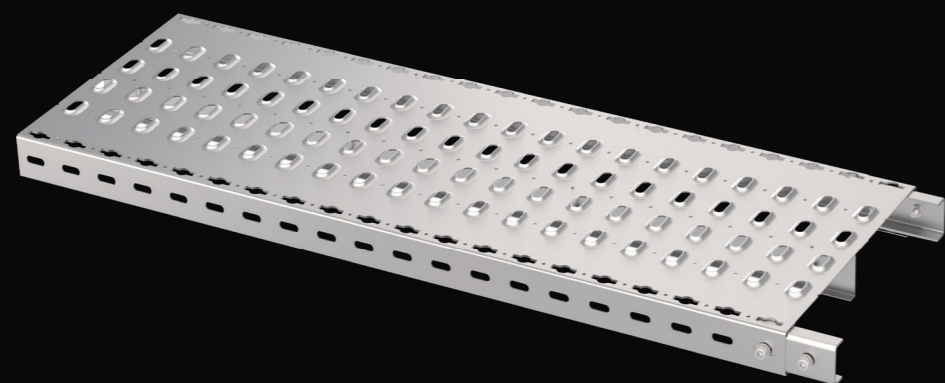
COST EFFECTIVE
SOLUTIONS



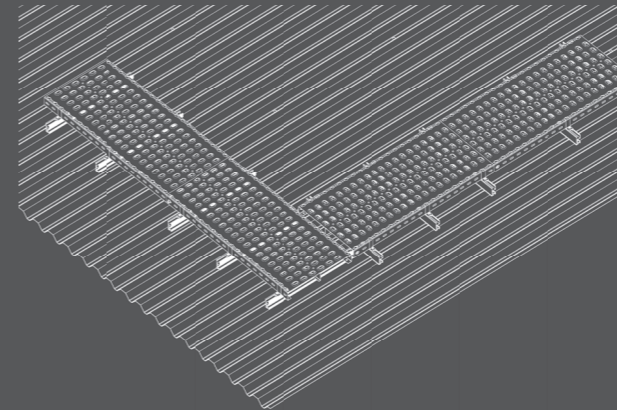
QUALITY
ASSURED



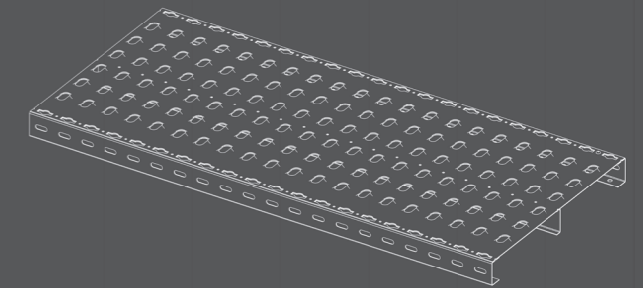
15 YEAR
WARRANTY



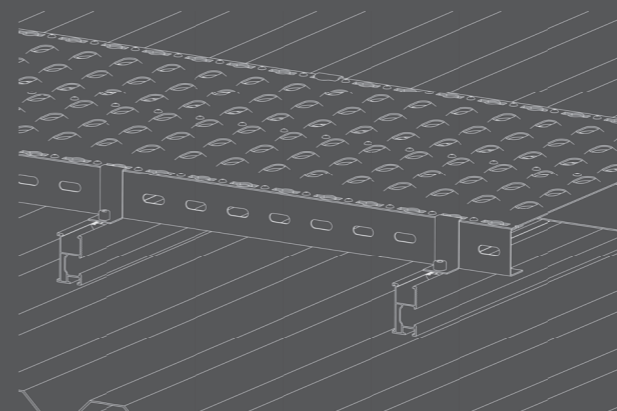
KEY FEATURES



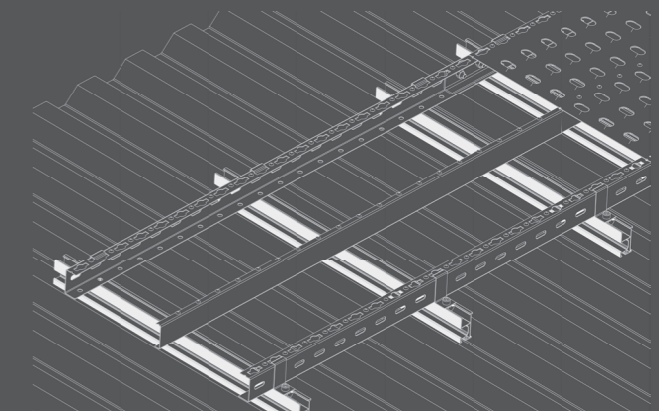
1. Manufactured from Zinc-Aluminum-Magnesium Coated Steel, our products offer superior corrosion resistance, surpassing that of galvanized steel.



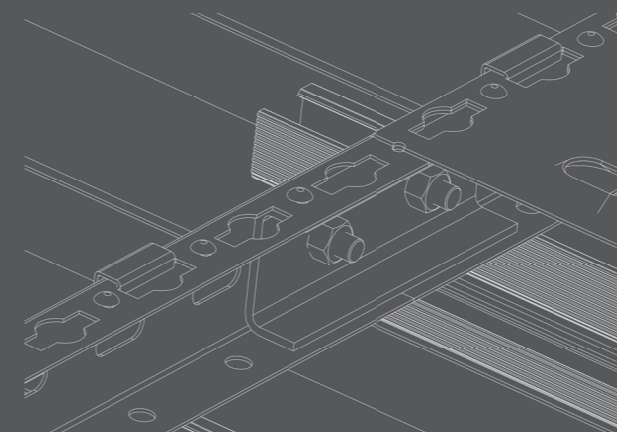
2. Raised surface design provides slip proof with additional strength.



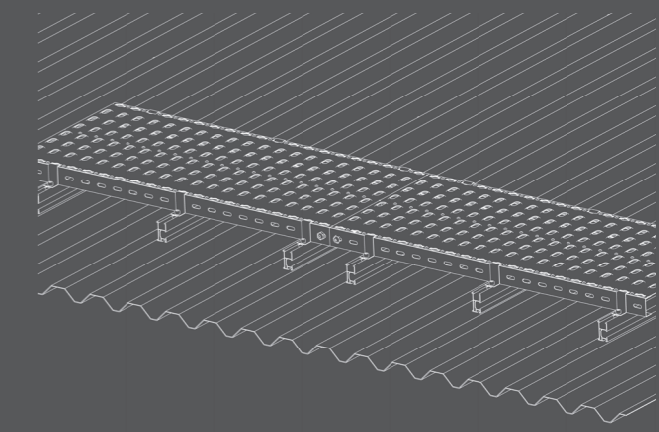
3. Utilizing an automated production process, results in the product being cost effective.



4. Multifunctional applications, can be installed on metal sheet directly, or connected with various types of roof brackets.



5. Quick and easy installation with pre-drilled holes allowing for simply on-site installation using a rivet gun.



6. Weight bearing threshold of 250kg, minimizing deformation.